



17 Wren Road, Prestwood, Great Missenden, HP16 0SB £200,000 *Leasehold*

Well Presented Ground Floor Apartment

- Ground Floor
- Modern Fitted Kitchen
- Bathroom
- Open Plan Living/Dining Room
- Double Bedroom
- Allocated Parking Space
- Remainder 999-Year Lease
- Desirable Village Location
- Viewing Highly Recommended
- EPC: To be confirmed



Located in a popular village location, and presented to a high standard throughout, is this ground-floor apartment. The property boasts a good size open-plan living/dining room with dual aspects over the communal grounds and opens into the kitchen. The kitchen enjoys modern fitted units and worktops with a good size storage cupboard housing the boiler. The modern fitted bathroom enjoys a white suite with a shower over the bath and the bedroom is a good size double, with double built-in wardrobes offering plenty of storage space. The entrance hallway provides good storage space with a cupboard with enough space to use as a utility room. The property also benefits from double glazed windows and electric heaters.

The location is highly sought after with the apartment being walking distance to the village centre where a good range of shops, pharmacies and pubs are located, with Great Missenden being a short drive away, with mainline trains running into London Marylebone and Birmingham.

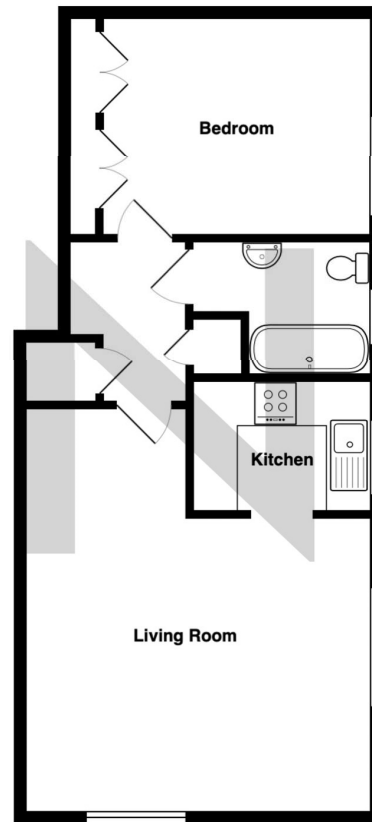
An internal inspection of this superb ground-floor apartment is highly recommended.

Agents Note
We may refer you to recommended providers of ancillary services such as Conveyancing, Financial Services, Insurance and Surveying. We may receive a commission payment fee or other

benefit (known as a referral fee) for recommending their services. You are not under any obligation to use the services of the recommended provider. The ancillary service provider may be an associated company of JNP Estate Agents Ltd.

AML Disclaimer
Please note it is a legal requirement that we require verified ID from purchasers before instructing a sale. Please also note we shall require proof of funds before we instruct the sale, together with your instructed solicitors.





The approximate total area for the elements of the property represented on the floorplan is 40 SqM (431 Sq.Ft)

Wren Road, Prestwood, Buckinghamshire, HP16 0SB

This floor plan is provided by Expert Survey Solutions Ltd is for indicative guidance only. Whilst every attempt has been made to ensure the accuracy of the floor plans contained here, measurements of doors, windows and rooms are approximate and no responsibility is taken for any error, omission or mis-statement. Details shown on this floorplan including all measurements, areas and proportions cannot be guaranteed by either the provider or estate agency and should not be relied upon. If there is any area where accuracy is required, please contact the selling agent for clarification.

Hazlemere and Great Missenden
01494 716000
haz@jnp.co.uk

330 Amersham Road
Hazlemere, High Wycombe, HP15 7PU



@JNPestateagents



@jnpestateagents

JNP is a trading name of JNP Estate Agents Ltd registered in England at Howard House, 3 St Mary's Court, Blossom Street, York, YO24 1AH. Company number 03764697. We may refer you to recommended providers of ancillary services such as Conveyancing, Financial Services, Insurance and Surveying. We may receive a commission payment fee or other benefit (known as a referral fee) for recommending their services. You are not under any obligation to use the services of the recommended provider. The ancillary service provider may be an associated company of JNP.