



**Flat 8, Uplands House, Four Ashes Road, Cryers Hill, HP15 6DY** **£260,000** *Leasehold*

# A One Bedroom Maisonette in a Popular Location

- Ground Floor Apartment
- Spacious Double Bedroom
- Gated Development
- Open Plan Kitchen & Living Room
- Refitted Kitchen & Bathroom
- Landscaped Gardens
- Allocated & Visitor Parking
- Converted in 2021
- Forming part of a Grade II listed building
- EPC: To be confirmed



Opening on to open countryside with beautiful, far-reaching viewings is Uplands House, which was originally a country house built in 1859. It was further developed in the 1980's and converted in 2020/2021, offering a range of apartments and maisonettes. This gated development with its sweeping driveway through manicured grounds, has a touch of class, that certainly makes it stand out from the crowd.

The maisonette itself offers a generously sized outdoor seating area, ideal for soaking up the afternoon sun. Its own private entrance leads through to a hallway which in turn leads through to an open plan kitchen and living room with floor to ceiling windows to the front. The kitchen offers a high

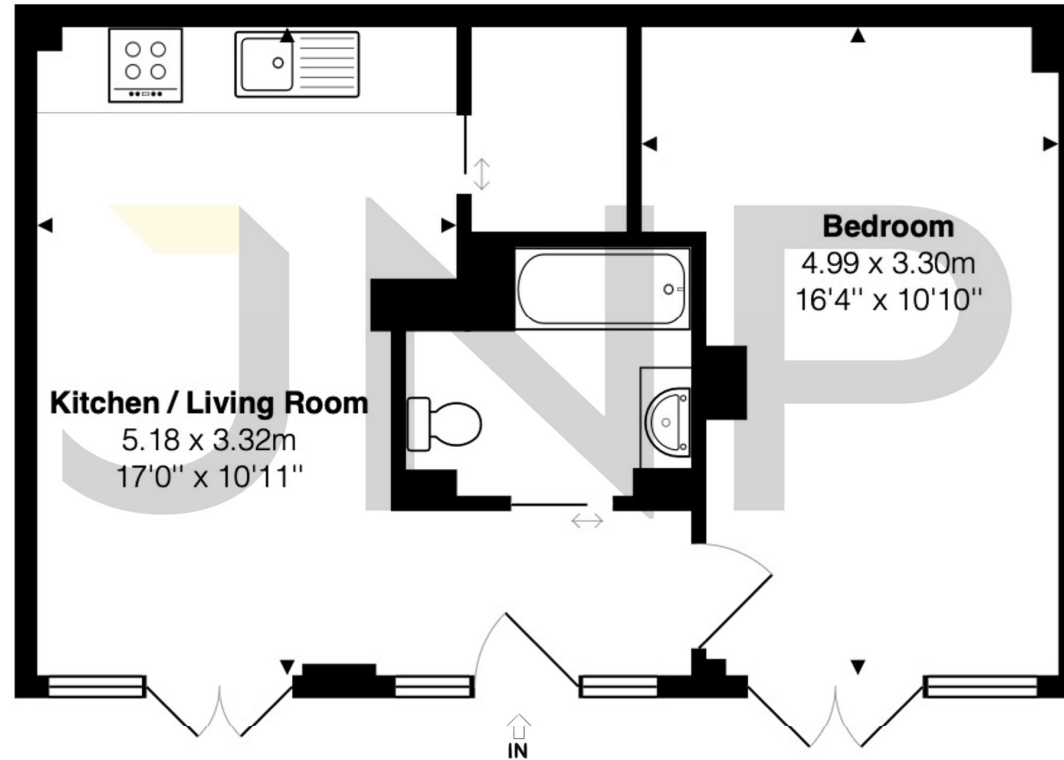
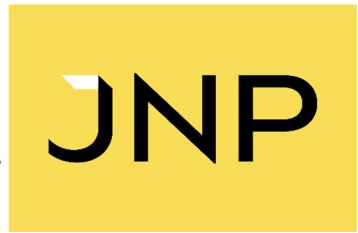
specification range of wall and base level units with integrated appliances and utility cupboard. There is also a luxurious three piece bathroom suite with marble effect wall and floor tiles and a spacious double bedroom again with floor to ceiling windows. Allocated and visitor parking can be found at the development.

Uplands House is a development that has to be visited for you to appreciate this wonderful setting. Open to a range of buyers from first time buyers to those looking to downsize.

#### Agents Note

We may refer you to recommended providers of ancillary services such as Conveyancing, Financial Services, Insurance and Surveying. We may receive a commission payment fee or other benefit (known as a referral fee) for recommending their services. You are not under any obligation to use the services of the recommended provider. The ancillary service provider may be an associated company of JNP Estate Agents Ltd.





The approximate total area for the elements of the property represented on the floorplan is 42 SqM (447 Sq.Ft)

Uplands House, Four Ashes Road, Cryers Hill, High Wycombe, Buckinghamshire, HP15 6DY

This floor plan is provided by Expert Survey Solutions Ltd for indicative guidance only. Whilst every attempt has been made to ensure the accuracy of the floor plans contained here, measurements of doors, windows and rooms are approximate and no responsibility is taken for any error, omission or mis-statement. Details shown on this floorplan including all measurements, areas and proportions cannot be guaranteed by either the provider or estate agent and should not be relied upon. If there is any area where accuracy is required, please contact the selling agent for clarification.

Hazlemere and Great Missenden  
01494 716000  
haz@jnp.co.uk

330 Amersham Road  
Hazlemere, High Wycombe, HP15 7PU



JNP is a trading name of JNP Estate Agents Ltd registered in England at Howard House, 3 St Mary's Court, Blossom Street, York, YO24 1AH. Company number 03764697. We may refer you to recommended providers of ancillary services such as Conveyancing, Financial Services, Insurance and Surveying. We may receive a commission payment fee or other benefit (known as a referral fee) for recommending their services. You are not under any obligation to use the services of the recommended provider. The ancillary service provider may be an associated company of JNP.