



Leo Crescent, Princes Risborough, HP27 9FR £625,000 *Freehold*

Detached Home Overlooking Fields

- Four Bedrooms
- Two Ensuites
- Downstairs Cloakroom
- Open Plan Living Space
- Driveway & Garage
- Balcony Overlooking Fields
- Modern Contemporary Home
- Kitchen With Appliances
- NHBC Guarantee
- EPC: B



Step into this exquisite modern detached house with a main bedroom featuring an ensuite and a balcony overlooking picturesque fields. The second bedroom boasts a charming Juliet balcony and ensuite, perfect for enjoying the views. Downstairs, you'll find a convenient cloakroom, ideal for guests.

The open plan living space is bright and inviting, with plenty of room for relaxing and entertaining.

The property is beautifully maintained and exudes a contemporary charm that is sure to impress.

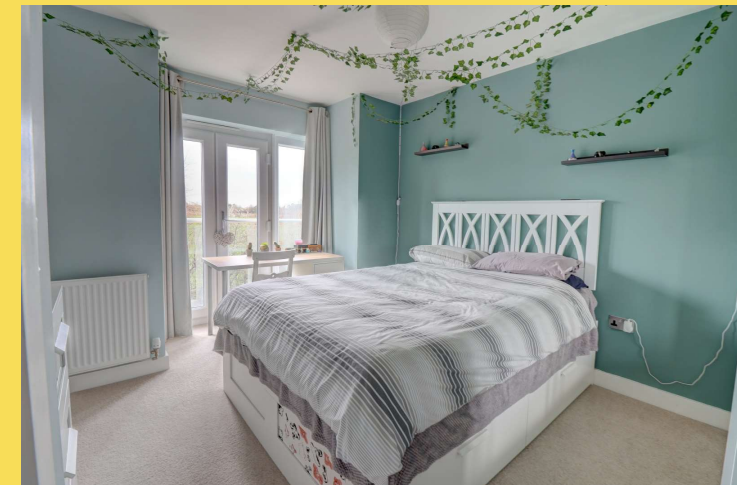
Outside, the garden offers a peaceful retreat, while the off-street parking and garage provide ample space for vehicles. Located in a peaceful position with local amenities, schools, and parks nearby, this property is a true gem. Don't miss the opportunity to make this stunning house your new home sweet home!

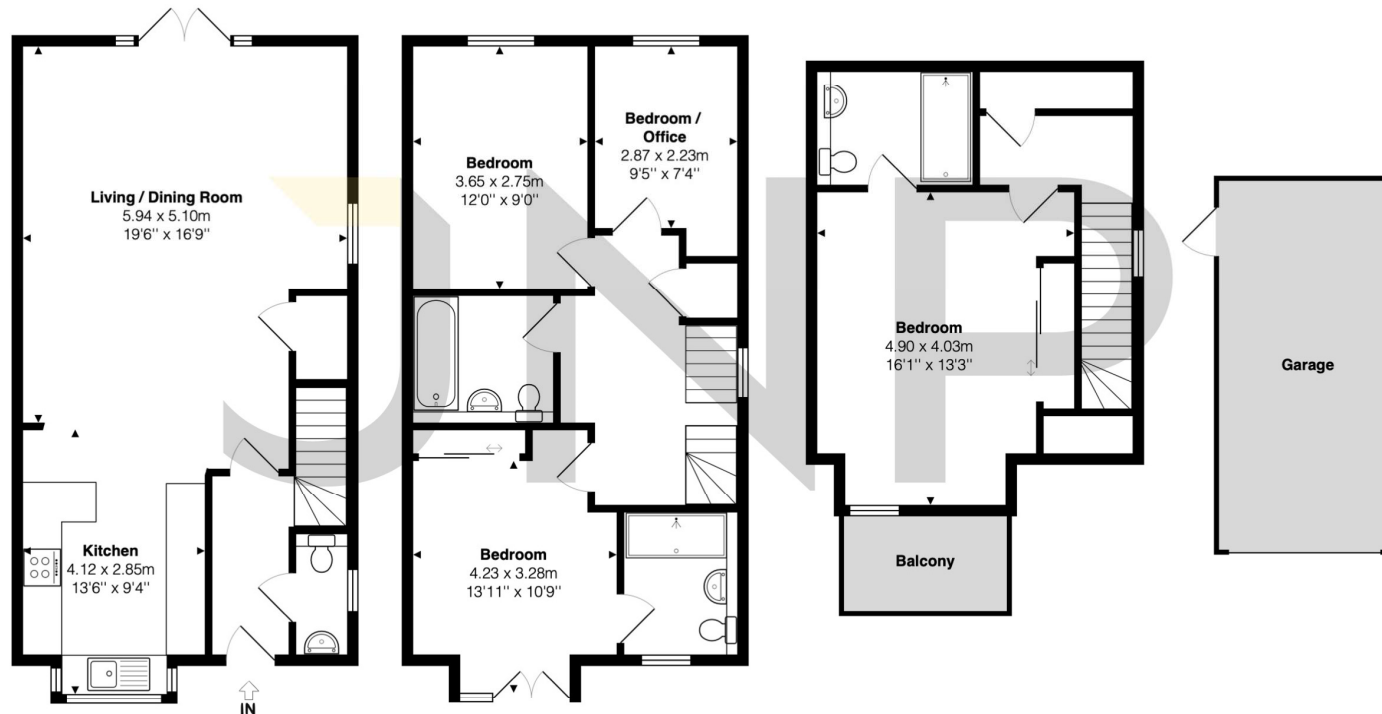
Council Tax Band: F
EPC EER: B

AML Disclaimer
Please note it is a legal requirement that we require verified ID from purchasers before instructing a sale. Please also note we shall require proof of funds before we instruct the sale, together with your instructed solicitors.

Agents Note

We may refer you to recommended providers of ancillary services such as Conveyancing, Financial Services, Insurance and Surveying. We may receive a commission payment fee or other benefit (known as a referral fee) for recommending their services. You are not under any obligation to use the services of the recommended provider. The ancillary service provider may be an associated company of JNP Estate Agents Ltd.





The approximate total area for the elements of the property represented on the floorplan is 124 SqM (1335 Sq.Ft)

Leo Crescent, Princes Risborough, Buckinghamshire, HP27 9FR

This floor plan is provided by Expert Survey Solutions Ltd for indicative guidance only. Whilst every attempt has been made to ensure the accuracy of the floor plans contained here, measurements of doors, windows and rooms are approximate and no responsibility is taken for any error, omission or mis-statement. Details shown on this floorplan including all measurements, areas and proportions cannot be guaranteed by either the provider or estate agency and should not be relied upon. If there is any area where accuracy is required, please contact the selling agent for clarification.

Princes Risborough (JNP)
01844 345666
riz@jnp.co.uk

1 Market Square
Princes Risborough, Buckinghamshire, HP27
0AP

 @JNPestateagents  @jnpestateagents

JNP is a trading name of JNP Estate Agents Ltd registered in England at Howard House, 3 St Mary's Court, Blossom Street, York, YO24 1AH. Company number 03764697. We may refer you to recommended providers of ancillary services such as Conveyancing, Financial Services, Insurance and Surveying. We may receive a commission payment fee or other benefit (known as a referral fee) for recommending their services. You are not under any obligation to use the services of the recommended provider. The ancillary service provider may be an associated company of JNP.