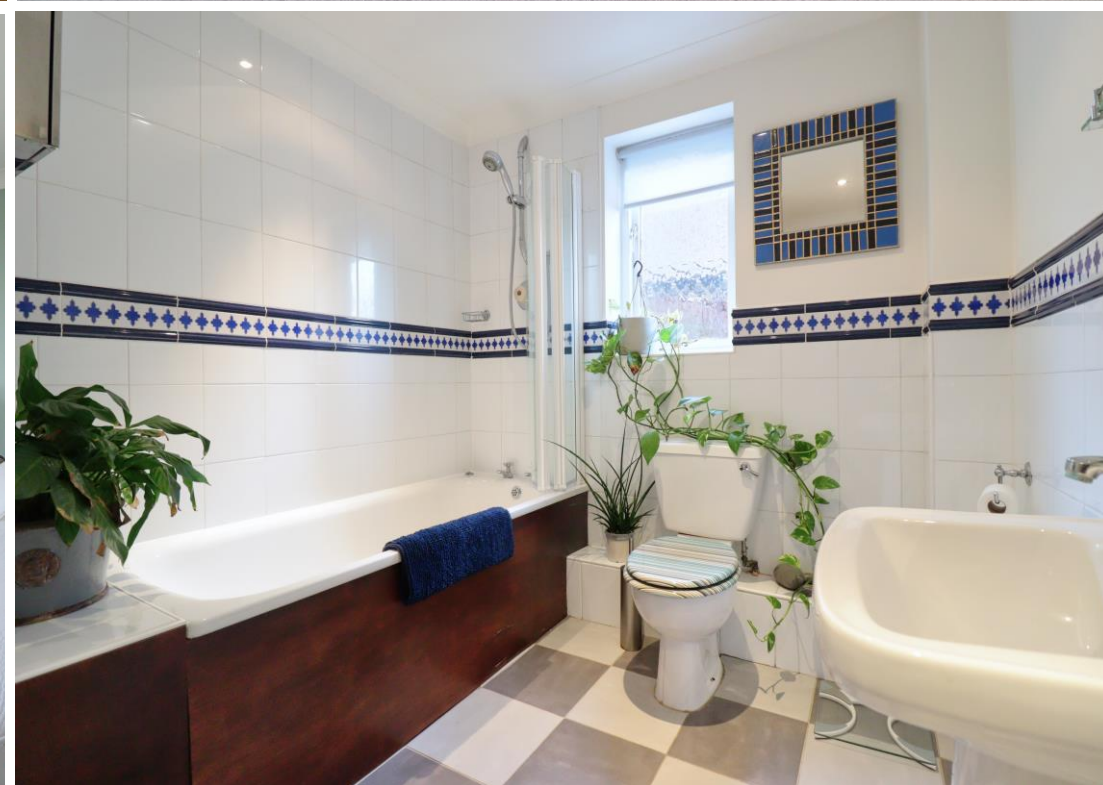


JNP



Vale House, Lower Road, Princes Risborough, Buckinghamshire, HP27 0PE

£2800 per calendar month



Family Home Located In Village Location

- 4/5 Bedroom Detached Home
- Modern Kitchen/Dining Area
- Enclosed Rear Garden
- Three Bathrooms
- Driveway Parking For Two Cars
- EPC EER Rating; TBC
- Available NOW on An Unfurnished Basis

EPC EER Rating; TBC. JNP Lettings are proud to launch to the market this rarely available 4/5-bedroom detached home situated in popular road in Princes Risborough benefitting from far reaching views. The property comprises; bright and airy entrance hall, bedroom one with en-suite bathroom, second bedroom/snug room and hallway leading to separate utility area and storeroom. Upstairs leads to living room overlooking the front of the property, large kitchen/dining room with modern kitchen and sliding bi-fold doors to patio area and enclosed rear garden, main bedroom with built in storage and large en-suite bathroom, two further bedrooms and family bathroom. The property further benefits driveway parking for two cars and oil central heating. Viewing is highly recommended to appreciate the versatile living accommodation and stunning location.

We may refer you to recommended providers of ancillary services such as Conveyancing, Financial Services, Insurance and Surveying. We may receive a commission payment fee or other benefit (known as a referral fee) for recommending their services. You are not under any obligation to use the services of the recommended provider. The ancillary service provider may be an associated company of JNP Lettings

We can be contacted on; 01494 520555 or lettings@jnp.co.uk





Example Floorplan

This floor plan is provided by Expert Survey Solutions Ltd is for indicative guidance only. Whilst every attempt has been made to ensure the accuracy of the floor plans contained here, measurements of doors, windows and rooms are approximate and no responsibility is taken for any error, omission or mis-statement. Details shown on this floorplan including all measurements, areas and proportions cannot be guaranteed by either the provider or estate agency and should not be relied upon. If there is any area where accuracy is required, please contact the selling agent for clarification.

The approximate total area for the elements of the property represented on the floorplan is 40 SqM (431 Sq.Ft)

