



FINE & COUNTRY
fineandcountry.com™

59 Oxford Road
59 Oxford Road Stone Aylesbury Buckinghamshire HP17 8PL

59 Oxford Road

Boasting superb southerly facing gardens and accommodation set over three floors, this charming home provides versatile living space and a fantastic opportunity for someone looking to put their own mark on a property. The house is set centrally within this popular village and falls within grammar school catchment making it ideal for young families.

Three Bedrooms

End Terrace Home

Two Receptions

Set Over Three Floors

Large Southerly Gardens

Grammar School Catchment

Popular Village Location

On Street Parking

Gas Central Heating







Boasting superb southerly facing gardens and accommodation set over three floors, this charming home provides versatile living space and a fantastic opportunity for someone looking to put their own mark on a property. The house is set centrally within this popular village and falls within grammar school catchment making it ideal for young families.

The front door leads into a hallway with stairs leading to both the lower ground floor and first floor. There is a sitting room to the front and a bathroom to the rear with a traditional white suite.

The lower ground floor currently houses the kitchen and seating/dining area with large larder cupboard. This provides a great opportunity to open up the space and create a stunning open plan kitchen.

On the first floor there are three bedrooms with two doubles and a single room.

The southerly facing rear garden is a real feature of this home and is a great size. It has been broken into sections and provides paved patios for alfresco dining. Plenty of lawned areas with mature trees and shrub borders and a wild flower garden at the bottom.

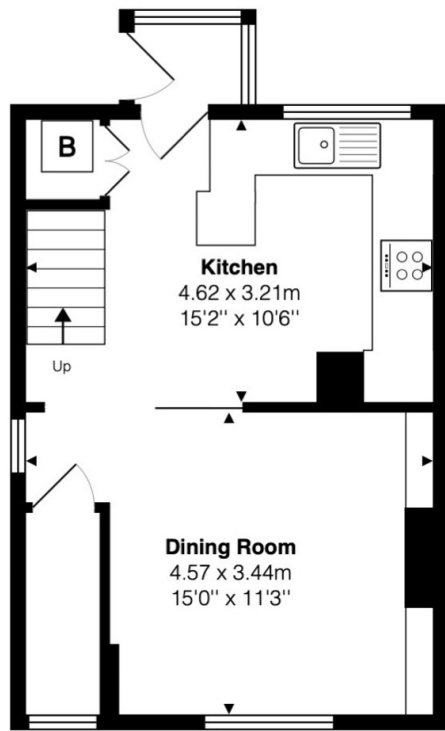
Location

Stone is an idyllic village situated on the outskirts of Aylesbury. The property is within walking distance of the village shop and other local amenities. Stone offers a range of amenities including a

village hall, Pub, Church, a Primary School and Petrol Station. There are village playing fields nearby and some lovely countryside walks can be enjoyed from your doorstep including Waddesdon Estate. Hartwell House and Spa is also close by for a spot of pampering. For more comprehensive shopping Aylesbury is only 3 miles away with a variety of larger department stores, High Street shopping, restaurants and supermarkets. The commuter is also well catered for with railway stations in, Wendover, Haddenham and Aylesbury providing regular direct line services to London Marylebone, Oxford and Birmingham. For motorists, the M40 (J8A) is approximately 12.5 miles away. In terms of education, there is a choice of primary schools in the surrounding villages and for secondary schooling, along with three grammar schools in Aylesbury.

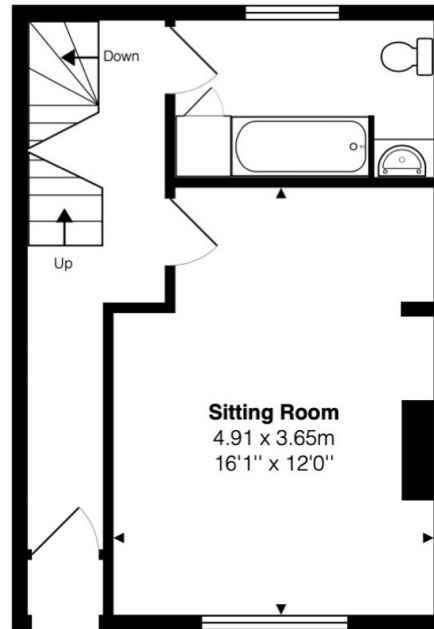






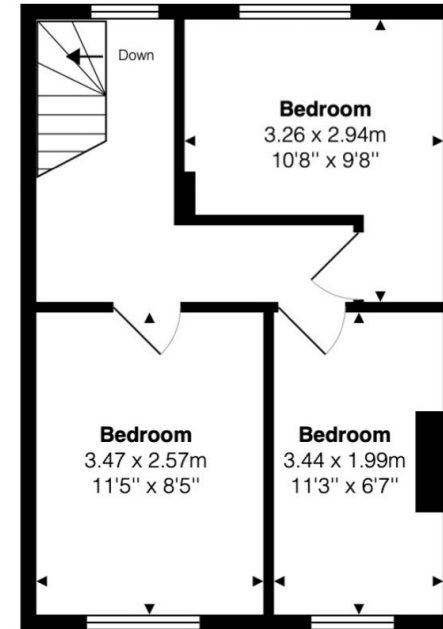
Lower Ground Floor

Approx. Floor Area 350 Sq.Ft. (33 Sq.M)



Ground Floor

Approx. Floor Area 336 Sq.Ft. 31 Sq.M



First Floor

Approx. Floor Area 336 Sq.Ft. (31 Sq.M)



The approximate total area for the elements of the property represented on the floorplan is 95 SqM (1023 Sq.Ft)



Oxford Road, Stone, Aylesbury, Buckinghamshire, HP17 8PL

This floor plan provided by Expert Survey Solutions Ltd is for indicative guidance only. Whilst every attempt has been made to ensure the accuracy of the floor plans contained here, measurements of doors, windows and rooms are approximate and no responsibility is taken for any error, omission or mis-statement. Details shown on this floorplan including all measurements, areas and proportions cannot be guaranteed by either the provider or marketing estate/letting agency and should not be relied upon. If there is any area where accuracy is required, please contact the appropriate agent for clarification.



AGENTS NOTE: All measurements are approximate and quoted in imperial with metric equivalents and for general guidance only and whilst every attempt has been made to ensure accuracy, they must not be relied on. The fixtures, fittings and appliances referred to have not been tested and therefore no guarantee can be given that they are in working order. Internal photographs are reproduced for general information and it must not be inferred that any item shown is included with the property. For a free valuation, contact the numbers listed on the brochure.

We may refer you to recommended providers of ancillary services such as Conveyancing, Financial Services, Insurance and Surveying. We may receive a commission payment fee or other benefit (known as a referral fee) for recommending their services. You are not under any obligation to use the services of the recommended provider. The ancillary service provider may be an associated company of Fine & Country.



Fine & Country South Buckinghamshire

Tel: 01844 343131

Belmont House, 1 Market Square, Princes Risborough, Buckinghamshire HP27 0AP

www.fineandcountry.com



FINE & COUNTRY
fineandcountry.com™